

How To Add A Simple Watermark

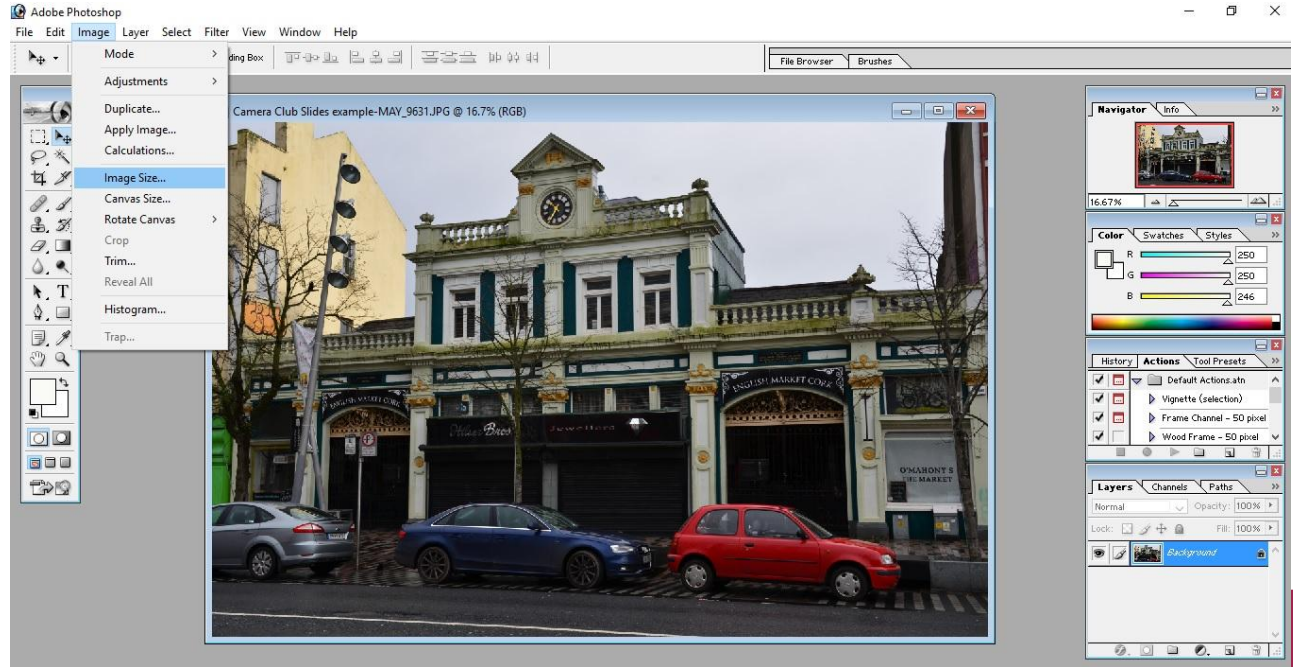
Add a simple watermark in CS2

Open & Resize your image

First open your image

Click on Image

then Image size



Choose Image Size & Resolution

Choose your image size

Example width 600/800

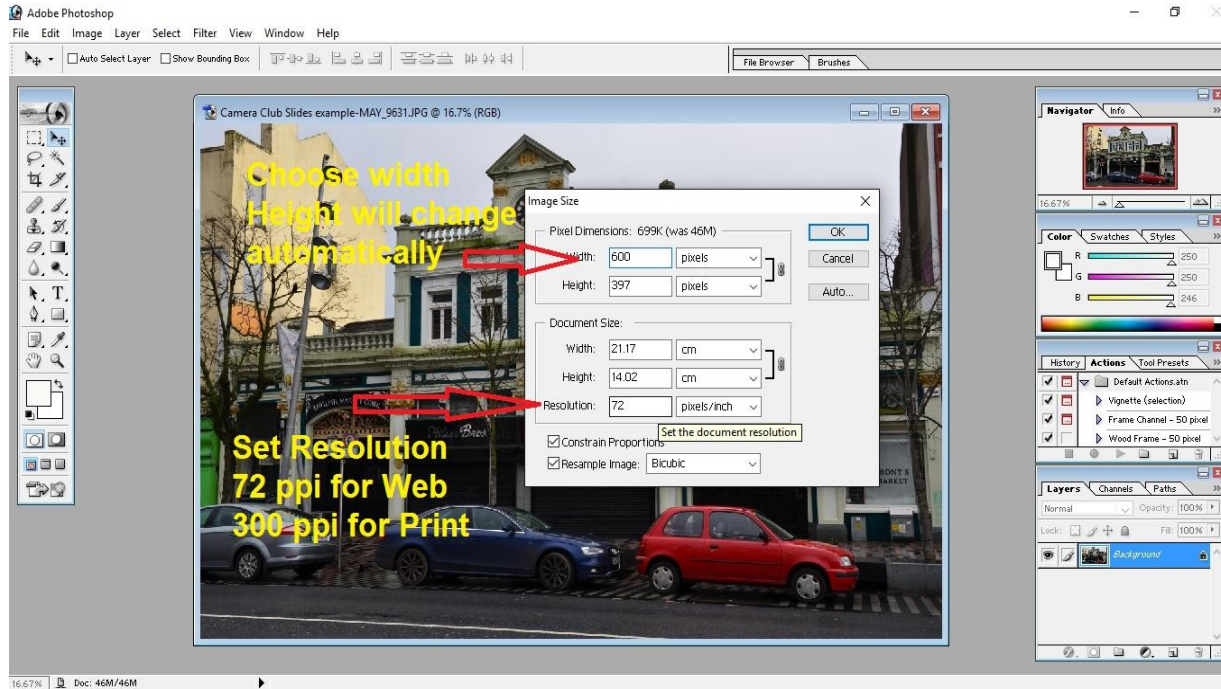
Height adjusts in proportion

Choose Resolution

72 ppi for Web Uploads

300 ppi for Print

Click "OK"



Add Watermark

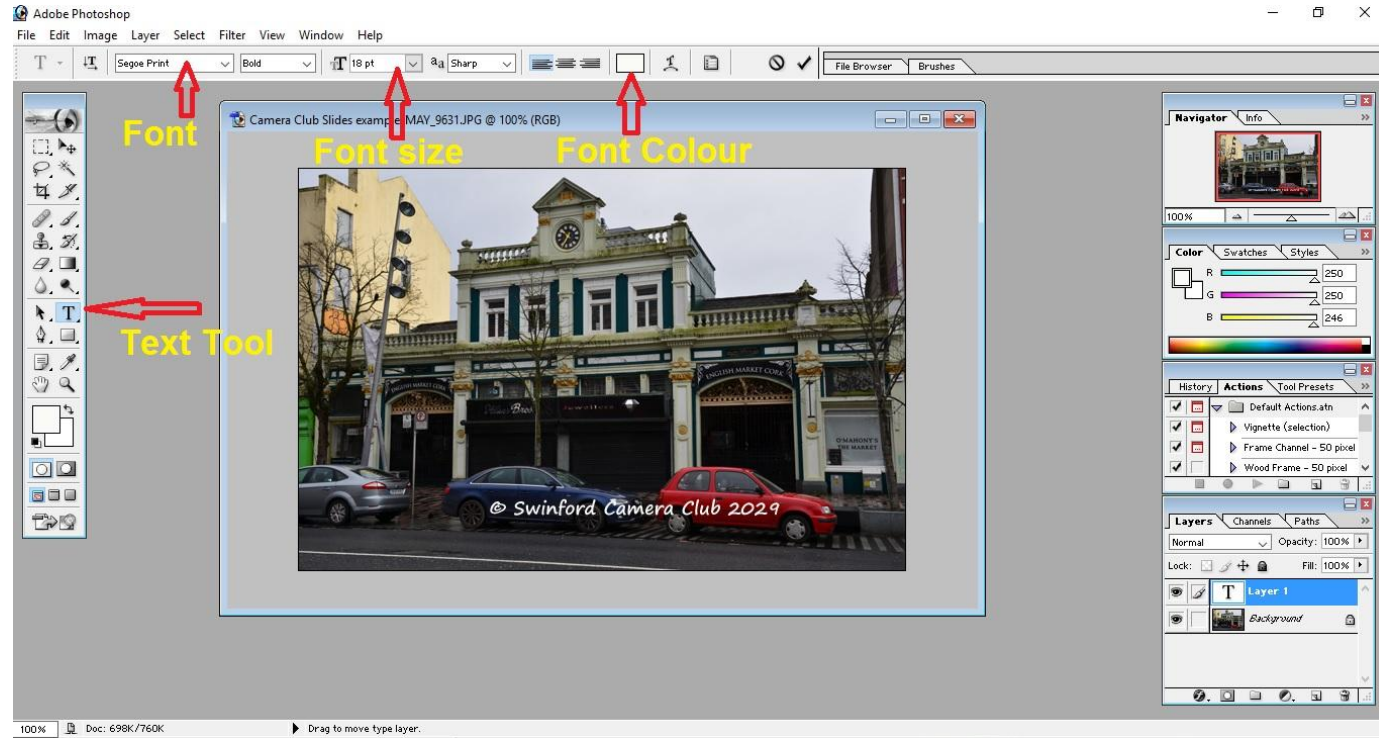
Click “T” Text Tool

Choose Text Font,

Text Size & Colour

For © Hold “alt” key

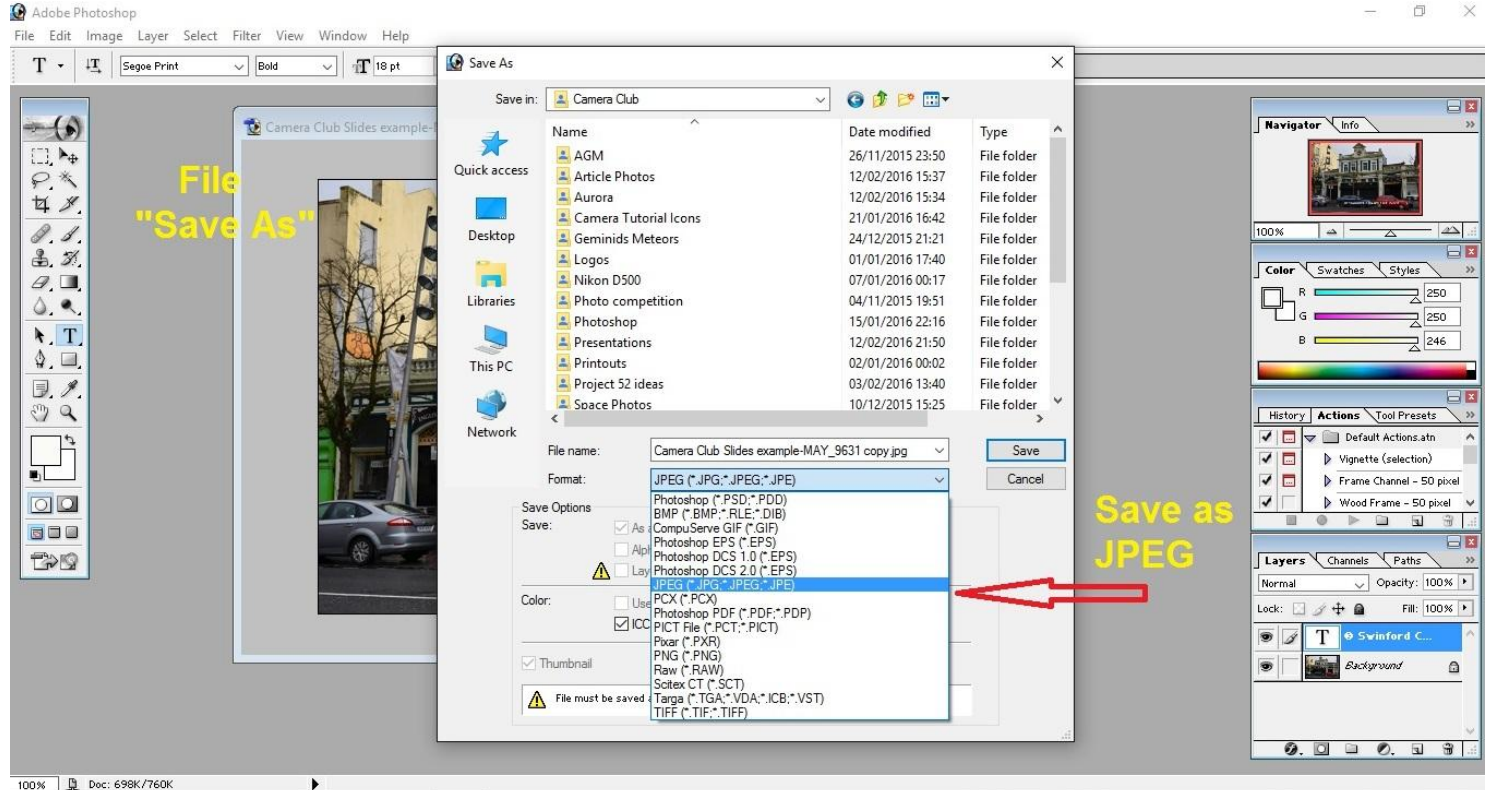
& type 0169



File "Save As"

Click File

"Save As" Jpeg



File "Save As"

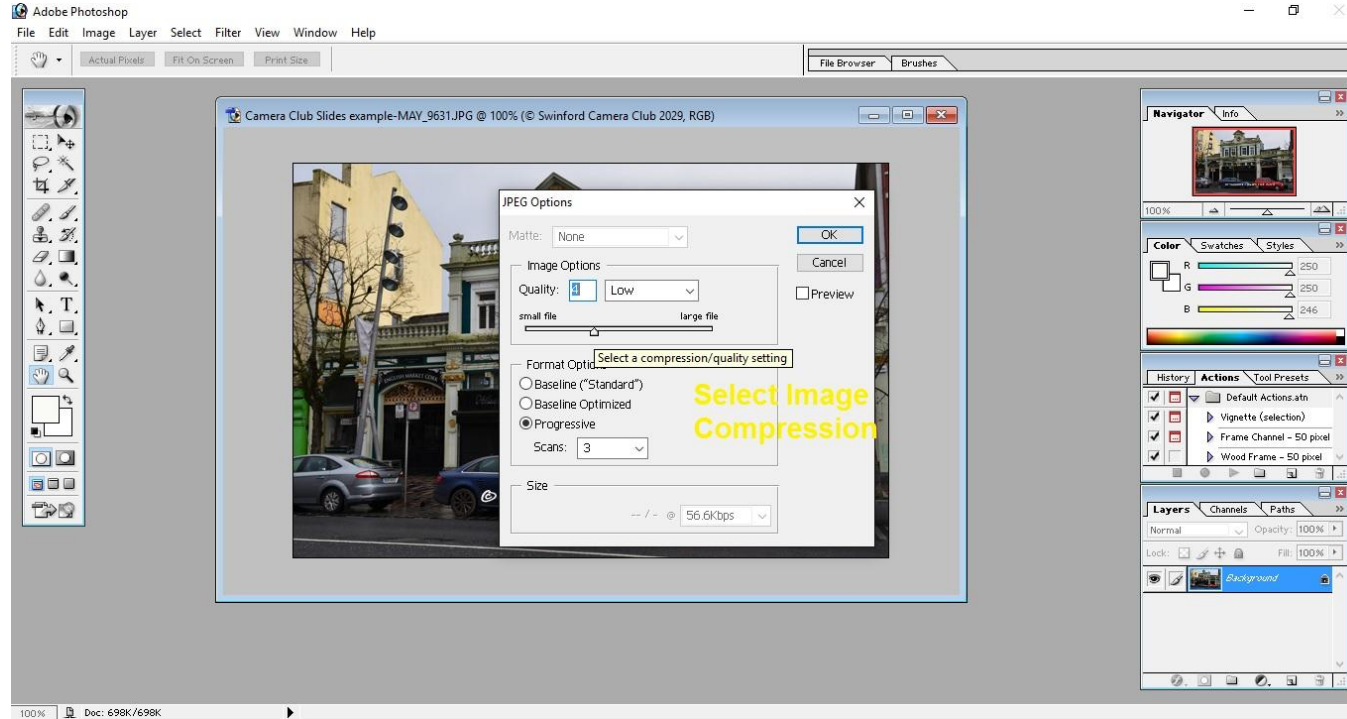
Save as JPEG



Select Image Compression

Select how much to
Compress your image
Anything less than 4
is usually pixelated

Click "OK"



Watermarked & Resized Finished Image

Image resized from 6.43 MB

4928 x 3264

To

600 x 397 and 58 KB file size



Visit

www.swinfordcameraclub.com

@SwinCameraClub

